

St. Louis' port extends
70 miles from the
southern boundary of
Jefferson County, MO to
northern boundary of
Madison County, IL

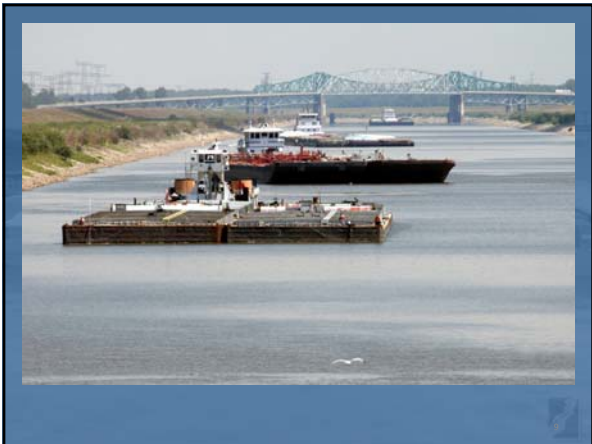
32 MILLION
tons of product pass
thru St. Louis Port on
an annual basis

There are 130
terminals or docks that
depend on barge traffic

Largest Inland Water Port for Agricultural Product in the World

Source: World Agricultural Forum







St. Louis Region:
Handles over 250 million
bushels of Corn annually
Missouri produces about
400 million bushels
annually

Port of St. Louis:
Handles over 12.5 million
tons of Coal
Enough to power
1,130,000 homes for a year

Port of St. Louis:
Handles 873,000 tons of
Steel and Iron
Enough to build 7 Golden
Gate Bridges

Did you know:
The Tri-City Regional Port
District moves 90% of the
Steel in this Region?

Port of St. Louis:
Moves over 1.2 million tons of
Cement by barge annually
Enough to repave all lanes of
Interstate 70 from St. Louis to
Topeka Kansas

Port of St. Louis:
Terminals handle over
873,000 tons of Fertilizer by
barge annually
Enough to fertilize over half
the corn acreage in Illinois for
a year

Master Plan of Transportation
Policy Making
Marketing is Key
